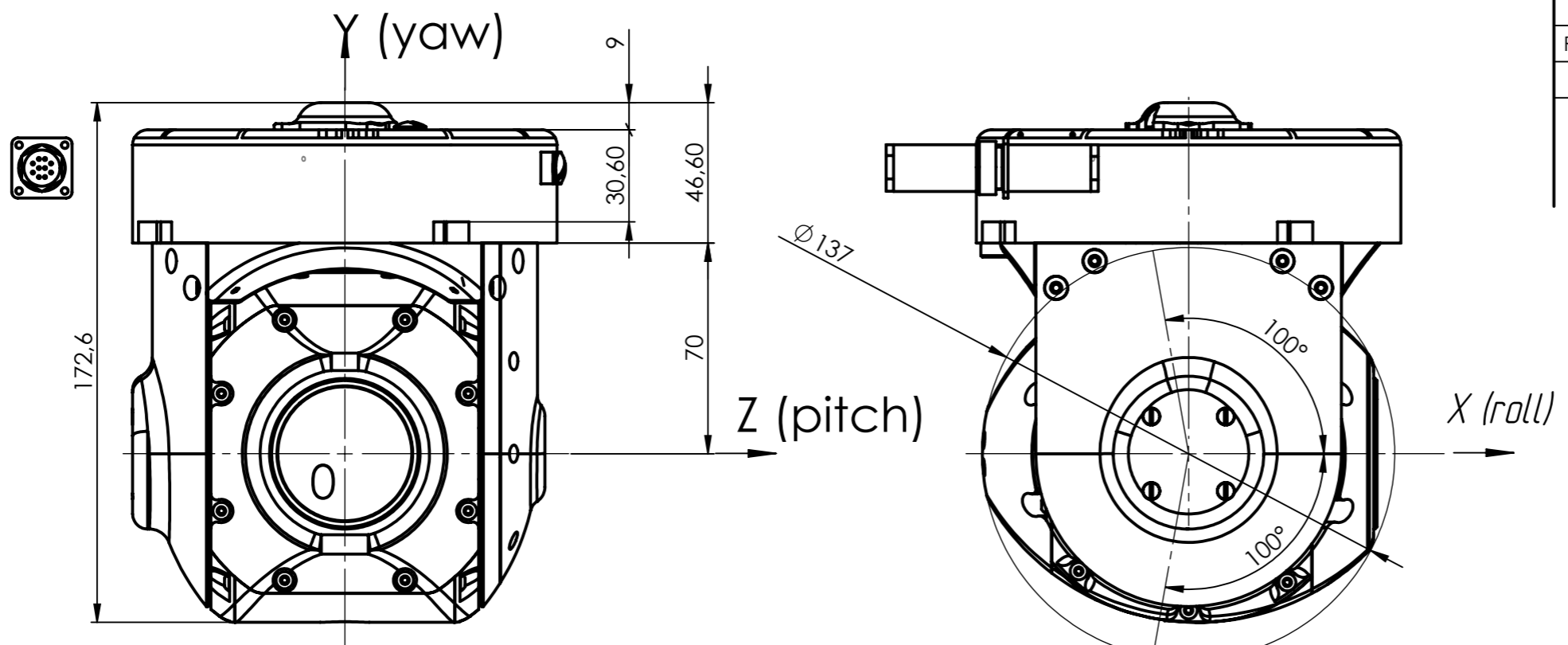


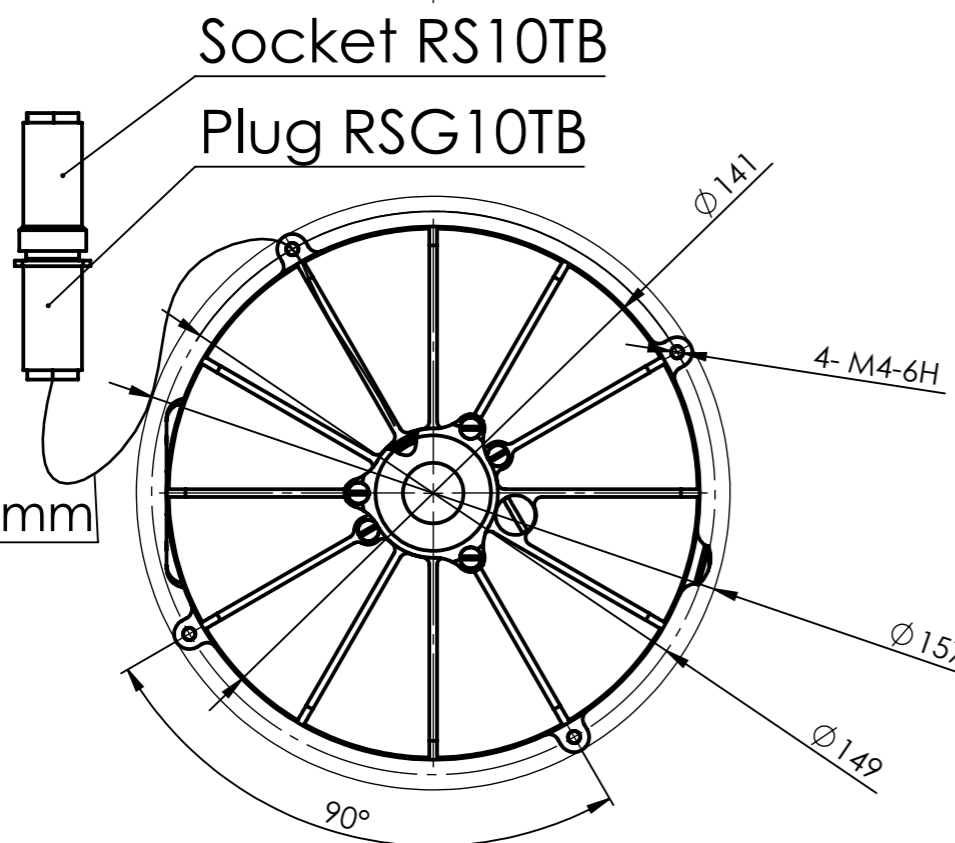
8 7 6 5 4 3 2 1

REVISIONS			
REV	DESCRIPTION	DATE	APPROVED



Angle rotation		Plug RSG10TB
Roll	± 30°	1 GND
Yaw	360°	2 V+
Pitch	± 100°	3 CAN H
		4 CAN L
		5 Reserve
		6 Reserve
		7 Ethernet TX +
		8 Ethernet TX -
		9 Ethernet RX +
		10 Ethernet RX -

Direct drive
 IP-65
 Image Stabilization
 Anti vibration frame
 Environment temperature range: -40 ... +50°C
 Accuracy of coordinates: 20-30 m
 Supply voltage: 8-25V
 Max. power consumption: 40W
 Video camera: SONY FCB-EV7520
 Video output: FHD H.264 Ethernet
 Max view angle: 63,7° (HOR.)
 Operational spectral range: 0.4...0.8 mkm
 Resolution: 1920x1080/60p
 Optical zoom: 30x
 Effective elements: 2,13 Mg Pix
 Focus: auto / manual
 Lens: F= 4.3 mm (wide) to 129 mm (tele)



F
E
D
C
B
A

F
E
D
C
B
A

This drawing and any information or descriptive material set out on it are the confidential and copyright property of UAVOS® and MUST NOT BE DISCLOSED, COPIED, LOANED in whole or part or used for any purpose without the written permission of UAVOS.

APPLICATION	
NEXT ASSY	USED ON

UNLESS OTHERWISE SPECIFIED DIM ARE IN MILLIMETERS
 [DIM ARE IN INCHES]
 TOL ON ANGLES ±0.5°
 0 PLACE ±0.5 1 PLACE ±0.1
 INTERPRET DIM AND TOL PER ASME Y14.5M
 Surface Finish: Ra3.2

THIRD ANGLE PROJECTION

DRAFTER		
CHECKER		
DEV ENGR		
CONTRACT NO.		
UAVOS FUNDED		
MATERIAL		

UAVOS

TITLE **GYRO STABILISED GIMBAL DAY SURVEILLANCE (GSG-140D)**

SIZE A3	CAGE CODE	DRAWING NUMBER UV01.6402.07.11.00	REV 10
SCALE 1:1	WEIGHT KG 1.34	SHEET 1 OF 1	

8 7 6 5 4 3 2 1