

GSG-140T GIMBAL

Gyro-stabilized gimbal for night surveillance

Gyro-stabilized 3-axis gimbal with thermal LWIR 640x480 camera. The optoelectronic onboard unit is designed to perform complex missions and is ideally suited for a wide range of applications, including inspections, security and law enforcement, surveillance, border control.

FEATURES

Weight: 1.2 kg

Housing: aluminum

IP-65

Drying cartridge

Direct drive

Absolute encoder

Angle rotation: roll - +/- 30°, yaw - 360°, pitch - +/- 100°

Coordinates measurement accuracy: 20-30 m

Transmission of target coordinates to GCU

Video output: Ethernet

Operating temperature: -40° ... +50°C

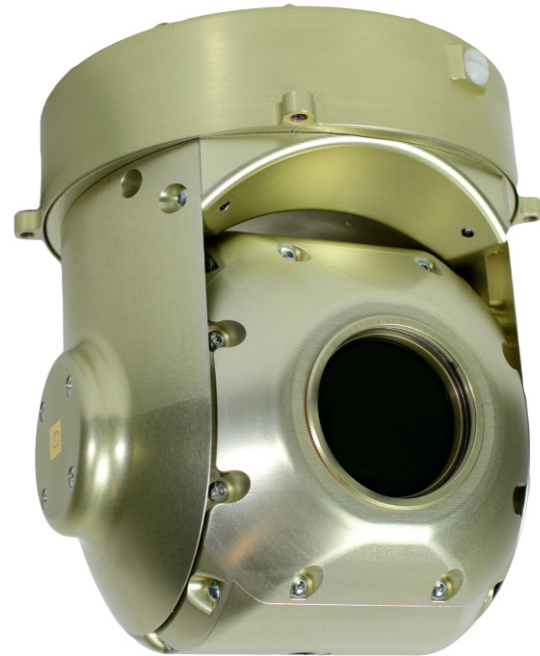
Supply voltage: 8-25V

Max. power consumption: 40W

Max. dimensions (length, diameter): 172.6x137mm

Vibration-proof frame

Rotation speed: 120°/sec



SENSORS



Camera parameters	Value
Spectral Range	8 μm - 14 μm
Thermal sensitivity	< 50 mK
HFOV field of view	63° (35mm)
Pitch	17 μm
Matrix resolution	640x512
Effective frame rate	50Hz

